

# School of Music

## Student Resources

Western Illinois University

### Music Library

The Music Library is located in Sallee 108. Jade Kastel is the music librarian and you can reach her at 309-298-1105.



### Advising

Information concerning advising is posted on the bulletin boards in the lobby of Browne Hall. You can view School of Music Advisors by clicking the "advising" link.

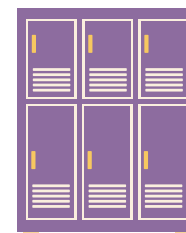


### Get Involved

American String Teachers Association (ASTA)  
National Association for Music Education (NAfME)  
Mu Phi Epsilon  
Music Business Association  
Music Therapy Association  
Phi Mu Alpha Sinonia Fraternity  
American Choral Directors Association (ACDA)  
Music Teachers National Association (MTNA)  
Sigma Alpha Iota (SAI)

### Lockers

Lockers are available for student use. Please email Anneliese Land with any questions:  
[a-land2@wiu.edu](mailto:a-land2@wiu.edu).

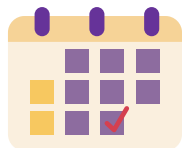


### Ensembles

Bands  
Choirs  
Jazz  
Orchestras  
Student Ensembles  
Faculty Chamber Ensembles



### Classroom Scheduling



Please contact Kate Curry to reserve any classrooms for meetings or rehearsals:  
[ka-curry@wiu.edu](mailto:ka-curry@wiu.edu).

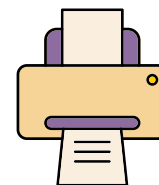
### Recital Attendance

Please click the "recital attendance" link to read the requirements for concert/recital attendance. You view the Recital Hall calendar and student recital forms [here](#).



### Printing Locations

Browne 107 is an unstaffed computer resource center. For a full campus list, please click the "printing locations" link.



### WARD Report

Your WARD report is how you can track your academic process toward your degree completion. You can view your WARD Report on STARS.



### Lobby Event Planning

Does your group need to reserve Browne Lobby for a table event? Please check out the schedule and email [ka-curry@wiu.edu](mailto:ka-curry@wiu.edu).

