

Storm Safety

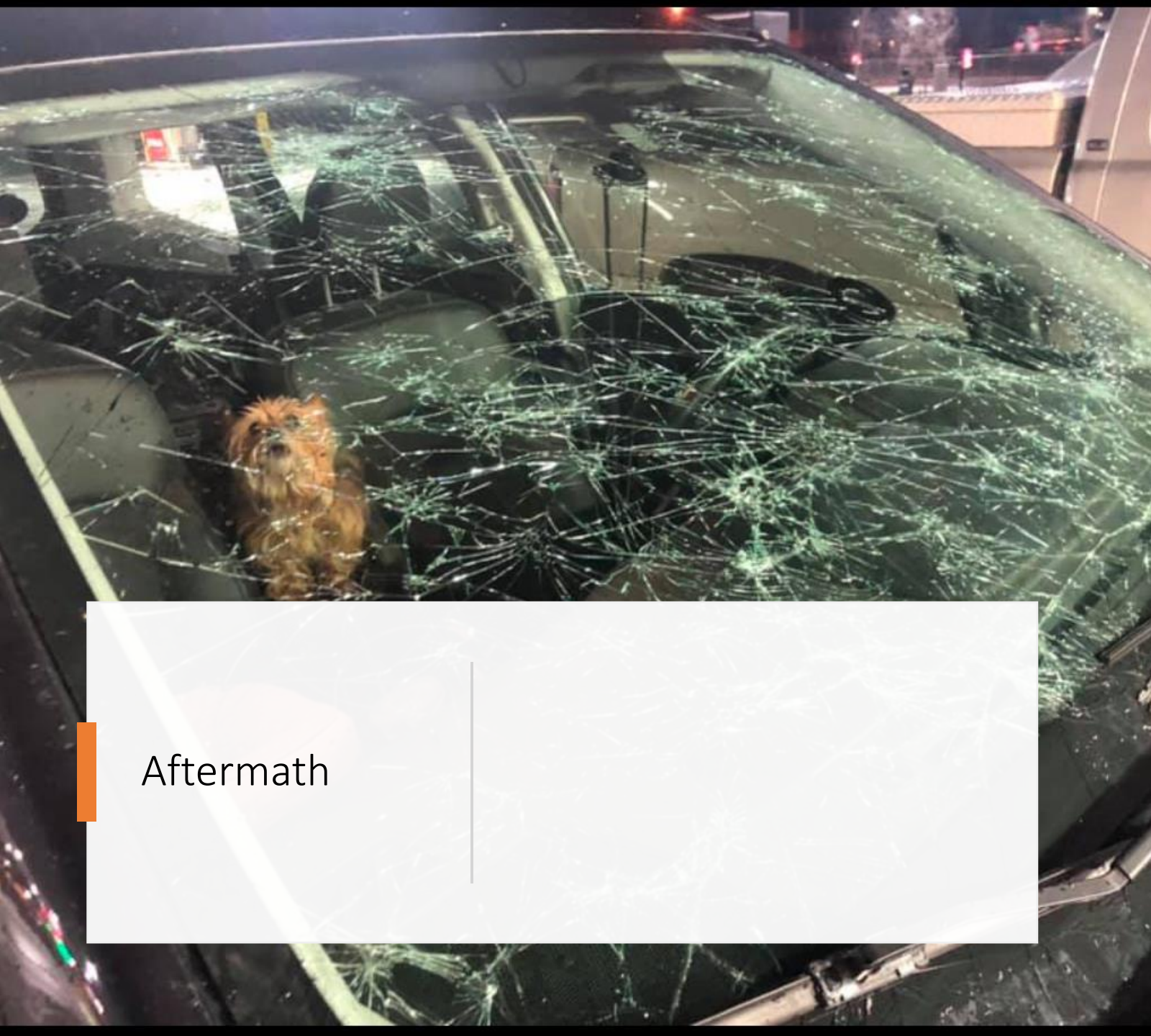
By: Anthony Yattoni

Challenges as a spotter

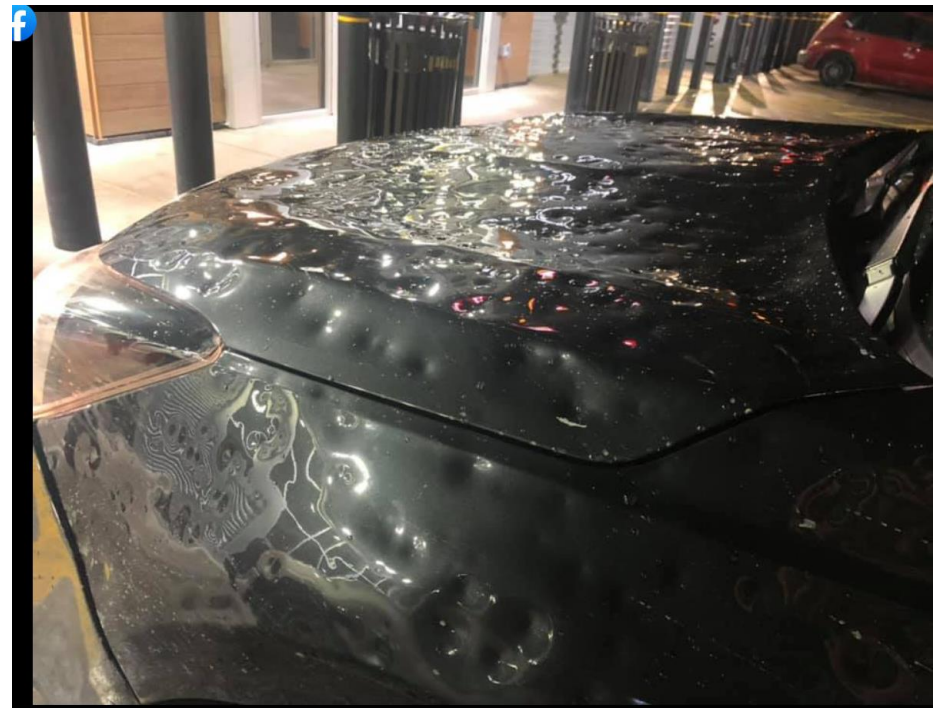
- <https://www.youtube.com/watch?v=FiDWYcNtHtY>
- Know thy land!
- Chaser Convergence
- Data Data DATA!!!!
- Alone = no beuno

Spotter Safety

- <https://www.youtube.com/watch?v=rYqc-U31tgM>
- Know thy environment
- Roads
- Bridges
- Once again DATA
- GORILLA HAIL
- https://www.youtube.com/watch?v=zHN_zvqw73U
- We all love REED



Aftermath



Spotter Safety Pt. 2

- <https://www.youtube.com/watch?v=XzBv073d8fw>
- Flooding
 - Unknown Road
 - Turn around
- Lightning
 - Increase in CG leads to increase in storm

Submit Storm Reports

- <https://www.youtube.com/watch?v=oEYQ-9zNIsU>
- Twitter
 - Location and time of report, especially road number
- Spotter Network
 - Relays information directly to NWS personell
 - Radarscope, RadarOmega
- Hail and rotating walls, funnels, tornadoes are easiest to report
- Report damage
- Last resort 911