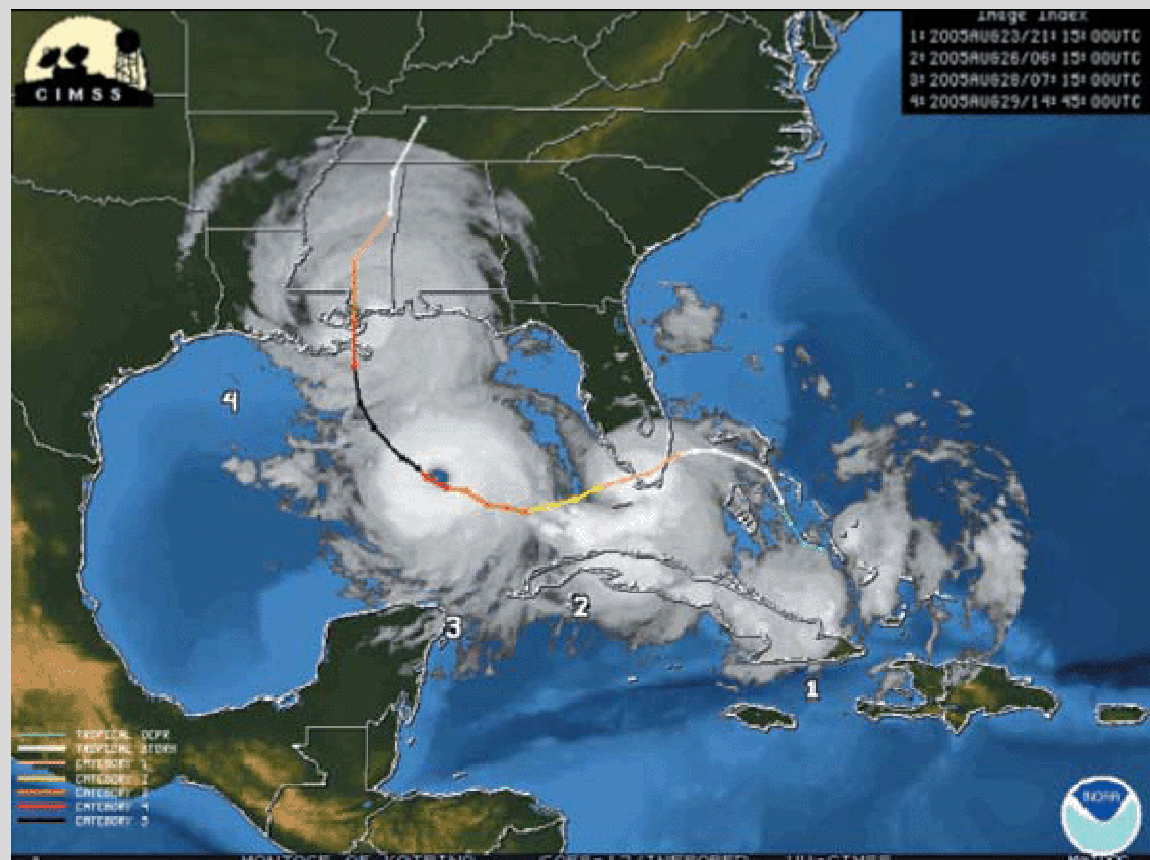


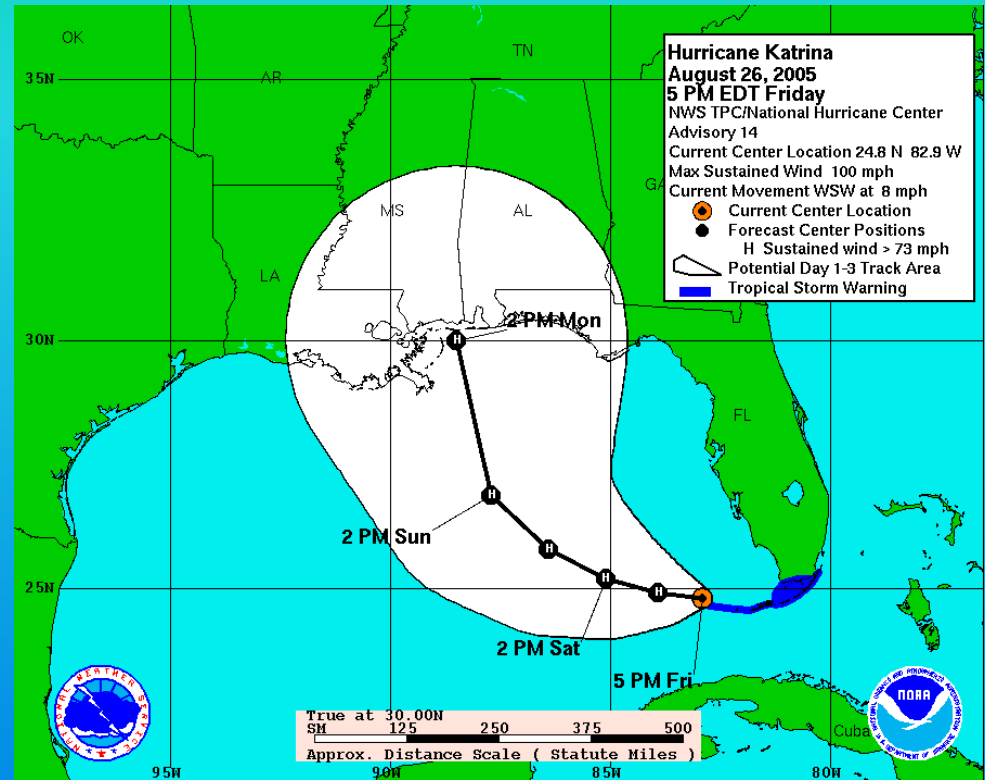
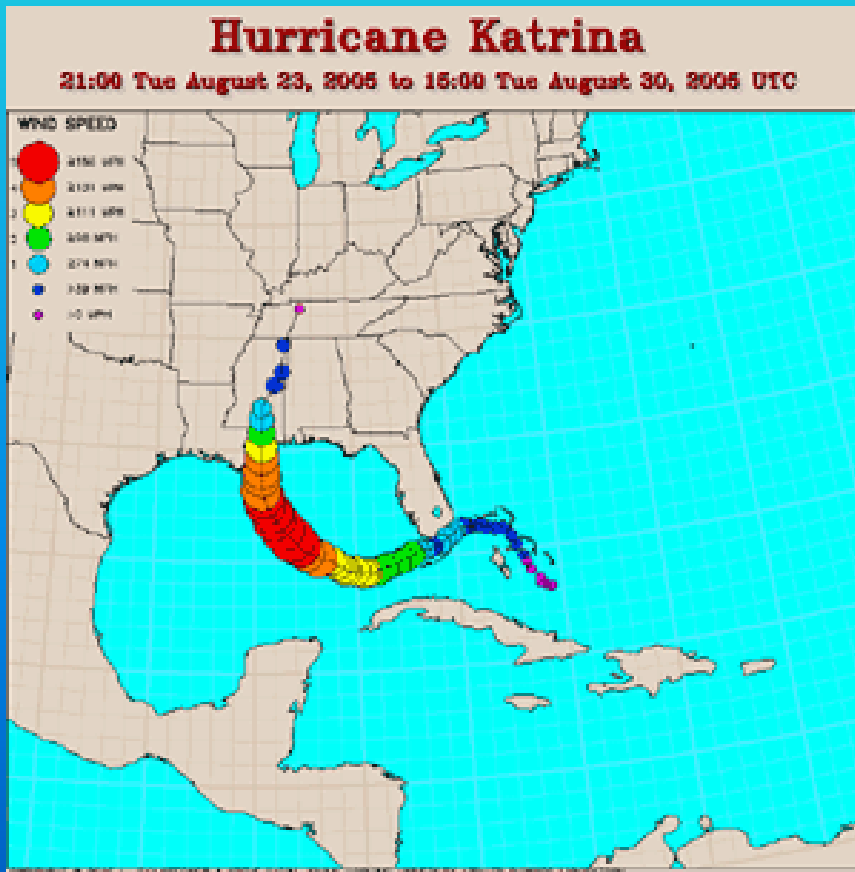
Hurricane Katrina



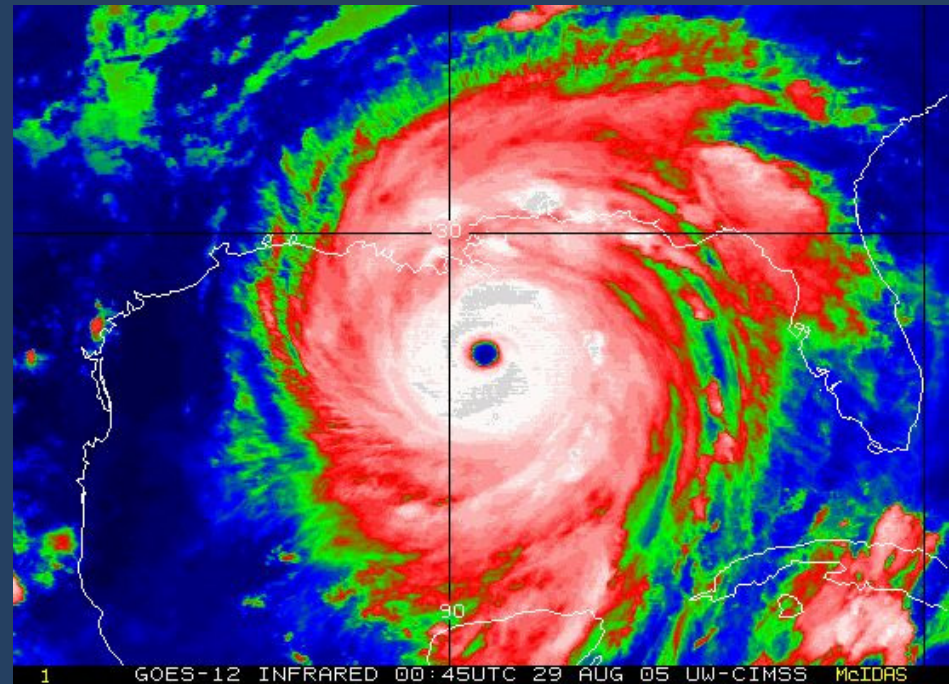
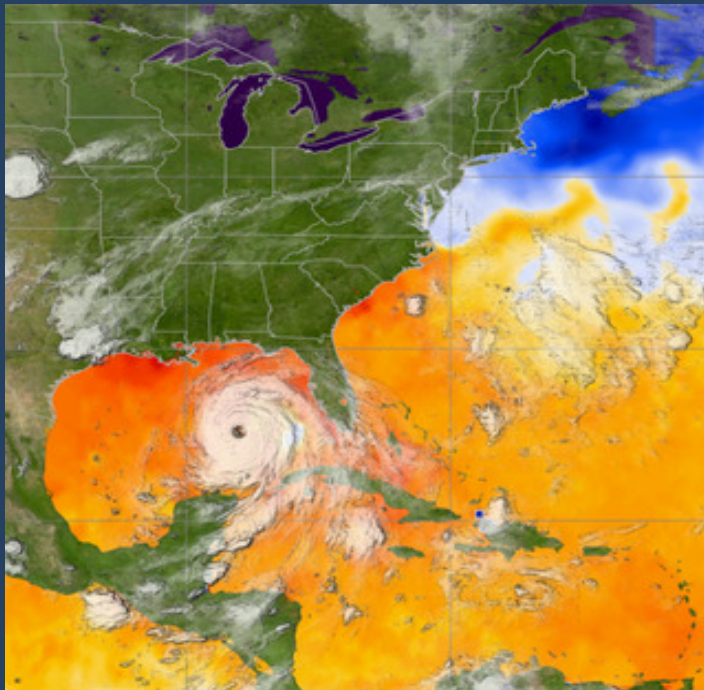
- Started out as Tropical Depression 12 around the southeastern Bahamas on August 23, 2005.
- Aug. 24th -Upgraded to a tropical storm
- Became a hurricane 2 hours before it hit Florida

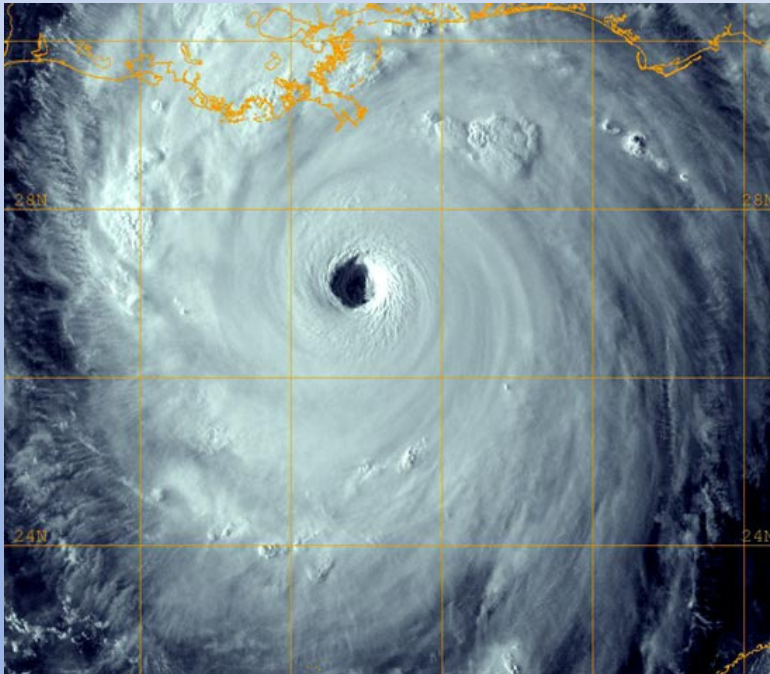


•Aug. 27th -reached Category 3 status
(111-130 mph)



- Aug. 28th – reached Cat. 5 status(156<mph)
- On the same day, Katrina reached its maximum wind speed of 175mph
- Lowest pressure of 902 mbar





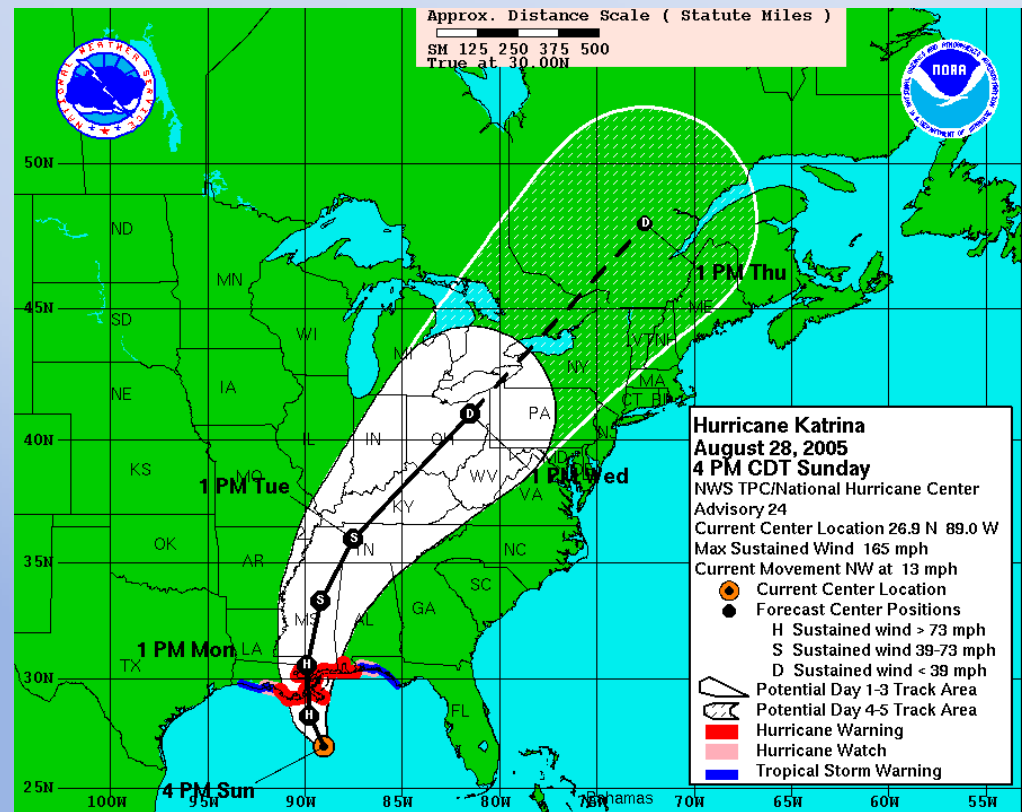
- August 29th –Katrina made landfall at 6:10 a.m. as a Cat. 3 with winds of 125mph
- Hurricane force winds extended 120 miles from the center of the storm

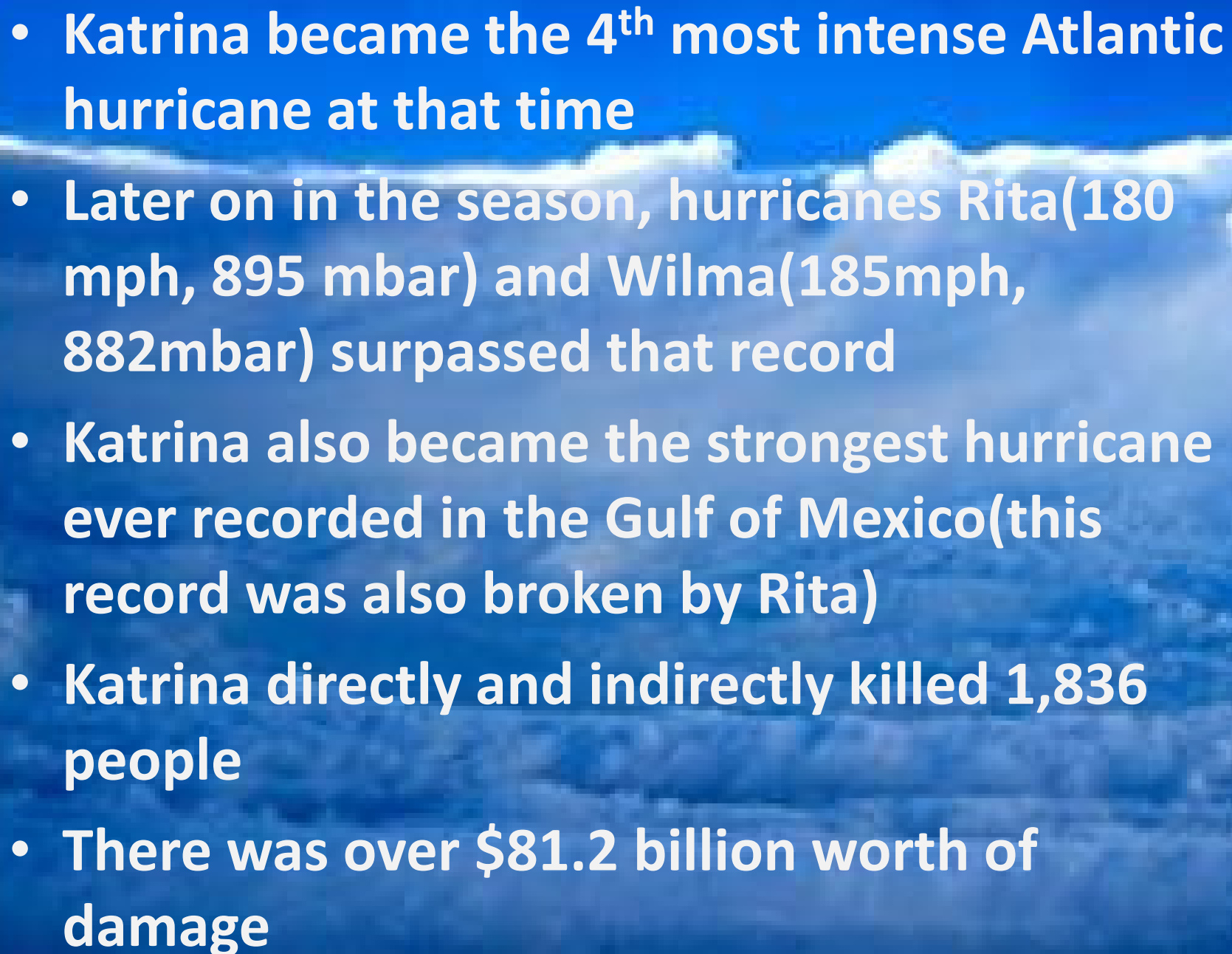


- Katrina had storm surges of 14 feet in the Mississippi area
- It dropped 8-10 inches of rain



- Katrina finally lost hurricane strength more than 150 miles from where it made landfall
- It was downgraded to a tropical depression while it was over Tennessee
- The remnants were last recognizable around the eastern Great Lakes on Aug. 31st
- Finally was picked up by a frontal boundary and affected eastern Canada
- During its journey across the U.S., Katrina produced 62 tornadoes in 8 different states



- 
- Katrina became the 4th most intense Atlantic hurricane at that time
 - Later on in the season, hurricanes Rita(180 mph, 895 mbar) and Wilma(185mph, 882mbar) surpassed that record
 - Katrina also became the strongest hurricane ever recorded in the Gulf of Mexico(this record was also broken by Rita)
 - Katrina directly and indirectly killed 1,836 people
 - There was over \$81.2 billion worth of damage

