

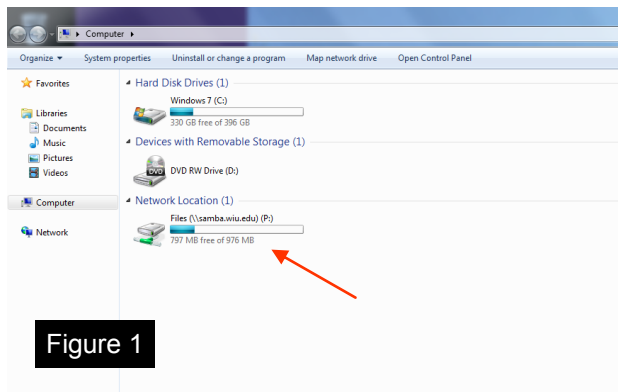
Network File Storage Options

Western Illinois University offers all students 1 GB of network storage. You can access this storage from any lab or personal computer using the directions below.

Network Storage Information for PCs

From on campus in the computer labs:

- Log into the lab computer using your ECom username and password
- Open **My Computer**
- Double click on the **Files (\samba.wiu.edu)' (P:)** icon (Figure 1)



From off campus:

- Windows computers must use a secure FTP client to access the network storage folder. *WinSCP* is a free SFTP client that can be downloaded from their website
- In the Host name box, type "sftp.wiu.edu"
- Choose sftp
- Enter your ECom username and password, click **Login**
- Click **Yes** to accept the server's finger print
- Click **Continue** at the authentication banner
- Go to "Files"

From ResNet:

- Click **Start**, right click on **My Network Places**, select **Map Network Drive**
- Type "P:" in the Drive box, type "\samba.wiu.edu\Files" in the Folder box
- Check the **Reconnect at logon** box, click **Finish**
- Enter your ECom username, password, click **OK**
- **Files on 'ECom Samba Server (samba.wiu.edu)' (P:)** (Figure 1) is your network storage location

Network Storage Information for Macs

From on campus in the computer labs:

- Log into the lab computer using your ECom username and password
- An icon named "Files" will appear on the desktop and also in the dock
- Files may be copied to and from this folder as needed

From off campus:

- Macintosh computers must use a secure FTP client to access the network storage folder. *Cyberduck* and *Fetch* are free secure FTP clients that can be downloaded from their websites
- Log onto "sftp.wiu.edu"
- Choose sftp
- Enter your ECom username and password and click **Log On**
- The "Files" folder is your network storage space

From ResNet:

- Under **Go** (top menu bar), slide down to **Connect to Server**
- Enter "smb://samba.wiu.edu/Files" and click **Connect**
- Enter your ECom username and password
- An icon named "Files" will appear on the desktop
- Files may be copied to and from this folder as needed

Need More Help?

- Visit the computer labs and ask a lab assistant for more information
- Call the Support Center at 309/298-2704 or visit the Center in 126 Stipes Hall
- www.wiu.edu/utech



WESTERN
ILLINOIS
UNIVERSITY