

Network File Storage Options

Western Illinois University offers all students one GB of network storage. You can access this storage from any lab or personal computer using the directions below.

Network Storage Information for PCs

From on campus in the computer labs:

- Log into the lab computer using your ECom username and password
- Open **My Computer**
- Double click on the **Files (\samba.wiu.edu)' (P:)** icon (Figure 1)

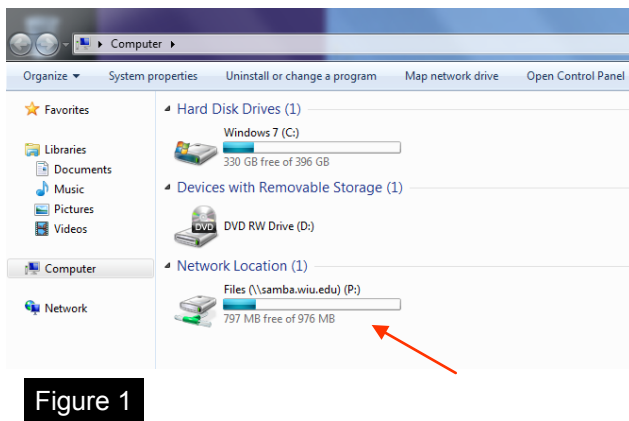


Figure 1

From off campus:

- Windows computers must use a secure FTP client to access the network storage folder. *WinSCP* is a free SFTP client that can be downloaded from their website
- In the Host name box, type "sftp.wiu.edu"
- Choose sftp
- Enter your ECom username and password, click **Login**
- Click **Yes** to accept the server's finger print
- Click **Continue** at the authentication banner
- Go to **"Files"**

From ResNet:

- Click **Start**, right click on **My Network Places**, select **Map Network Drive**
- Type "P:" in the Drive box, type "\samba.wiu.edu\Files" in the Folder box
- Check the **Reconnect at logon** box, click **Finish**
- Enter your ECom username, password, click **OK**
- **Files on 'ECom Samba Server (samba.wiu.edu)' (P:)** (Figure 1) is your network storage location

Network Storage Information for Macs

From on campus in the computer labs:

- Log into the lab computer using your ECom username and password
- An icon named "Files" will appear on the desktop and also in the dock
- Files may be copied to and from this folder as needed

From off campus:

- Macintosh computers must use a secure FTP client to access the network storage folder. *Cyberduck* is a free secure FTP client that can be downloaded from their website
- Log onto "sftp.wiu.edu"
- Choose sftp (from the pull-down menu choose "port 22")
- Enter your ECom username and password and click **Log On**
- The "Files" folder is your network storage space

From ResNet:

- Under **Go** (top menu bar), slide down to **Connect to Server**
- Enter "smb://samba.wiu.edu/Files" and click **Connect**
- Enter your ECom username and password
- An icon named "Files" will appear on the desktop
- Files may be copied to and from this folder as needed

Need More Help?

- Visit the computer labs and ask a lab assistant for more information
- Call the Support Center at (309) 298-2704 or visit the Center in 126 Stipes Hall
- www.wiu.edu/utech



WESTERN
ILLINOIS
UNIVERSITY