

# Western Hall

## Commencement Layout



In case of a fire or other emergency requiring evacuation:

- Activate the nearest fire alarm pull station.
- Exit in a calm and orderly fashion.
- Once you have evacuated to a safe location, immediately call 911.



Assist individuals who cannot exit the building using the stairs. Help them to an enclosed stairwell landing or other Area of Rescue Assistance and report their location to responding emergency personnel.



If a fire starts that is beyond your control to extinguish:

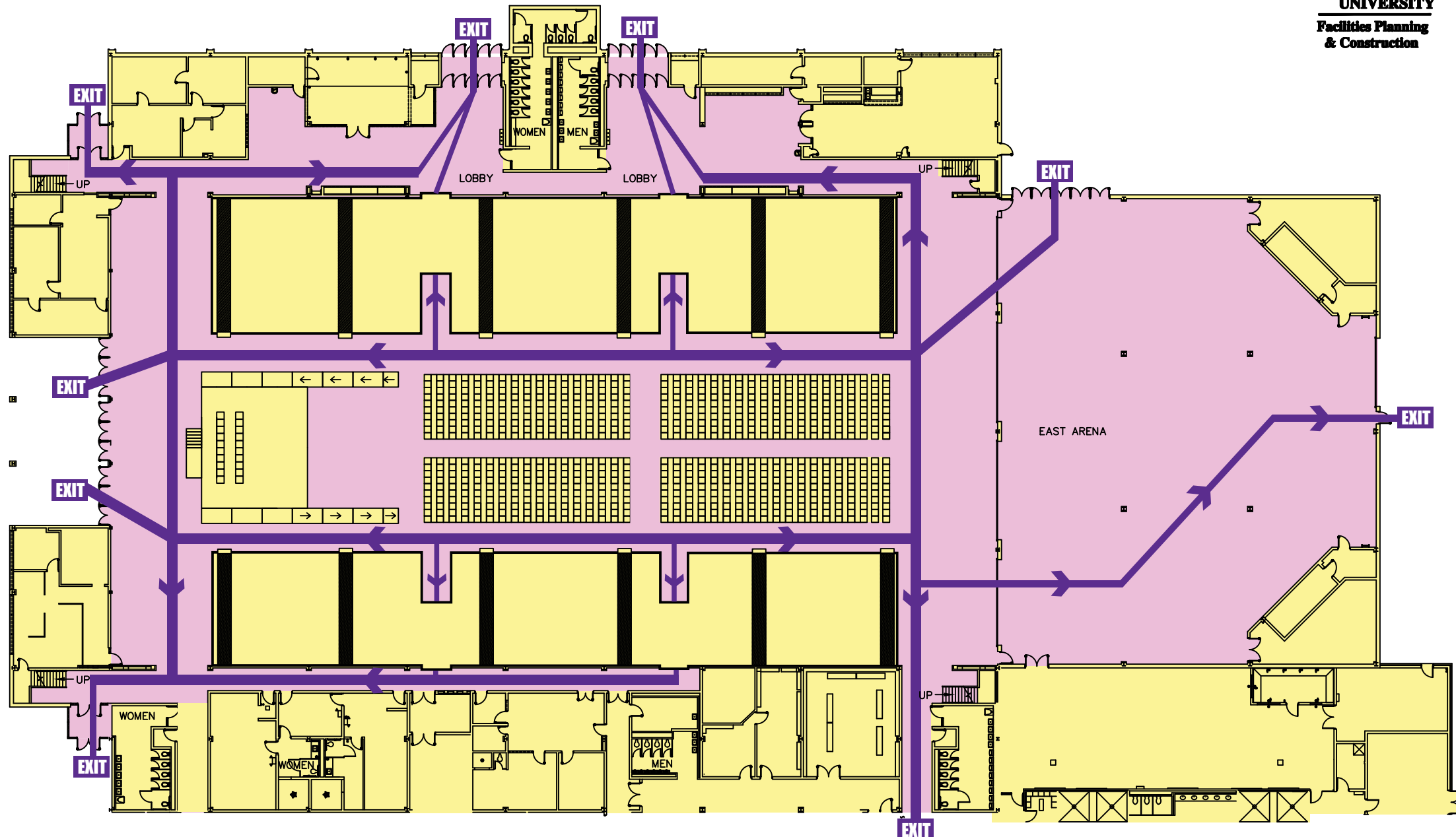
- Call 911.
- Activate the nearest fire alarm pull station
- Close the door as you leave to contain fire
- Follow the safest exit route



Call 911 or 298-1949 to report an emergency and/or important information.

### LEGEND

	FIRE EXTINGUISHER
	FIRE ALARM PULL STATION
	EXIT STAIRWAY
	PRIMARY EVACUATION ROUTE



**IN CASE OF EMERGENCY - DO NOT USE ELEVATORS - USE EXIT STAIRWAYS**

**IN CASE OF TORNADO - GO TO THE LOWEST LEVEL, INTERIOR OF THE BUILDING (AVOID WINDOWS AND DOORS)**

